



April 22, 2016

Subject: Ocean Street Sewer Repair

Dear Prospective Bidder:

The City of South Portland (City) Water Resource Protection Department is issuing this Invitation to Bid for sewer repair work within the Ocean Street and Wild Rose Avenue intersection. The scope of work identifying the Contractor's responsibilities and the City's responsibilities are outlined below. Attachment 1 presents a site location map of the work area.

Scope of Work

Two (2) existing 12-inch diameter vitreous clay sewer pipe sections require repair. The pipe sections, denoted as 2B_19-2B_17B and 2B_17B-2B_17A, respectively enter and exit sewer manhole 2B_17B identified on the site location map. The pipe trench excavation will require an approximately 13 foot deep cut.

The Contractor is responsible for replacing the pipe sections with 13-foot long, 12-in diameter, SDR-35 PVC pipe joined to the existing pipes with Fernco couplings. The contractor is also responsible for providing traffic cones and barrels, pavement sawcut, trench excavation and backfill, DigSafe notification, and pavement repair. The City's standard trench repair section is provided in Attachment 2.

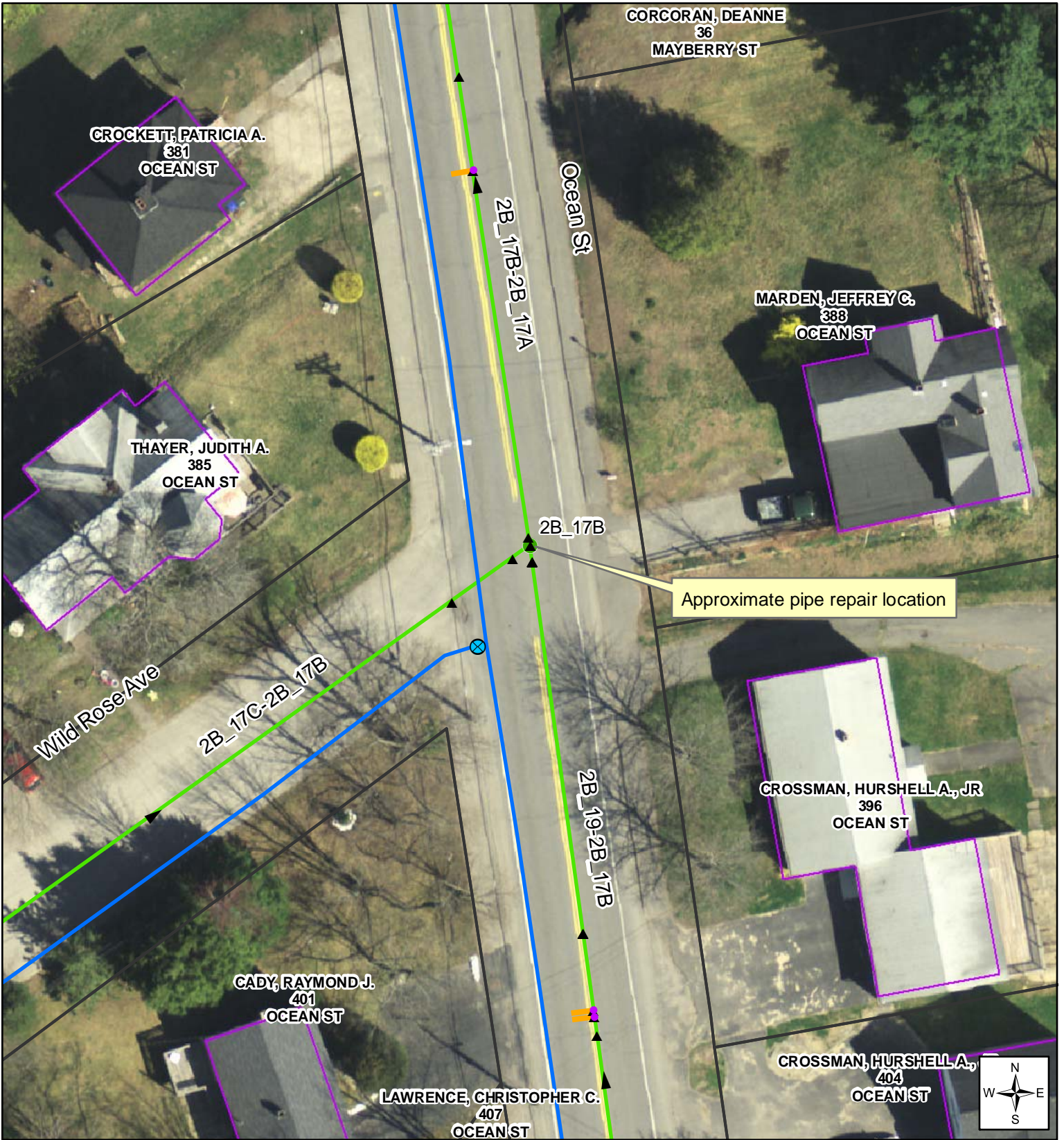
The City will provide police detail to regulate traffic flow for the duration of construction. The City will waive the street opening fee for this work. The City requests the sewer repair work be completed in one day by May 27, 2016. Please provide the City a lump sum price to perform the work by Friday, April 29. Should you have any questions, please feel free to contact Brad Weeks in Engineering or Dave Thomes in Sewer Maintenance.

Sincerely,

Brad Weeks
City of South Portland
Engineering Manager

cc: Patrick Cloutier, Director of Water Resource Protection
Dave Thomes, Collection Systems Manager
Adam Bliss, Engineering Department

Attachments



- Sewer Structures**
- Catch Basin in Sewer
 - Sewer Manhole with CSO
 - Vault or Chamber
 - Interceptor Sewer Manhole
 - Pump Station
 - Treatment Plant
 - Sewer Manhole
 - Wet Well
 - Service Tie
 - Private Pump Stations
 - Dead End

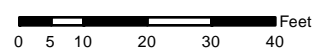
- Sewer Pipes**
- Force Main
 - Gravity
 - Service
 - Siphon
 - Storm
- Water System**
- Service Valves
 - Water Valve
 - Public Hydrants
 - Private Hydrant
 - Water Mains

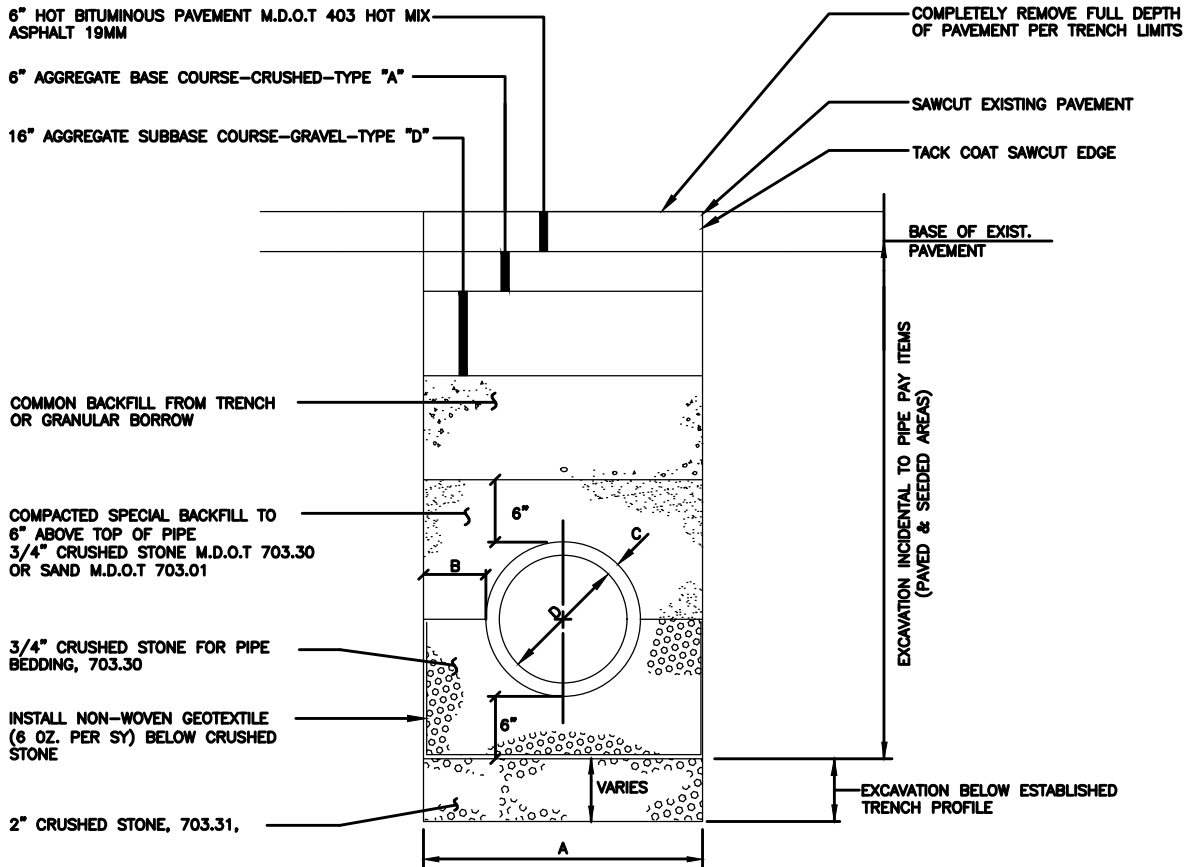
- Stormwater Structures**
- Culvert Inlet
 - Culvert Outlet
 - Outfall
 - Catchbasin
 - Drain Manhole
 - Outlet Control Structure
- Stormwater Pipes**
- CSO
 - Culvert
 - Gravity
 - Roof Drain

- Terrain**
- Waterbody
 - Wet Area
 - 2 Foot Contours
 - Hydrography
- Municipal**
- Political Boundary
 - Parcels, 12/2008
 - Buildings
- Sewer Districts**
- | | |
|-----|-----|
| 1H | 112 |
| 111 | 113 |



Water Resource Protection





PIPE TRENCH WIDTH - TABLE

PIPE DIA., "D" (INCHES)	MAX. TRENCH WIDTH, "A" (FEET)
6	5.0
8	5.0
10	5.0
12	5.0
15	5.0
18	5.0
21	5.0
24	5.5
27	6.0
30	6.0
36	7.0
42	8.0
DUAL PIPE 8"/18"	5.0

PIPE INSTALLATION DETAIL - NOTES

1. DEPTH OF BASE AND BASE GRAVEL SHALL MATCH GREATER OF EXISTING CONDITIONS OR THE DIMENSIONS SHOWN.
2. DIMENSION "B" SHALL BE SUFFICIENT TO ALLOW CRUSHED STONE BEDDING TO BE PLACED AND COMPACTED UNDER THE HAUNCHES OF THE PIPE; BUT IN ALL CASES "B" SHALL BE AT LEAST 9".
3. DIMENSION "A" SHALL BE BASED ON PIPE DIAMETER, AS SET FORTH IN THE PIPE TRENCH WIDTH TABLE.
4. BACKFILL COMPACTED TO 95% OPTIMUM DENSITY.
5. TRENCH SUPPORT AND DEWATERING IF REQUIRED IS INCIDENTAL TO THE COST OF THE PIPE.
6. PAVEMENT 6" HOT BITUMINOUS PAVING 19MM.
7. ALL FINISH PAVEMENT (SURFACE LIFT) SHALL BE INSTALLED WITH A STREET PAVER WITH A SCREED WIDTH SUFFICIENT TO SPAN THE LIMITS OF PAVING WORK.
8. PAVEMENT LIFTS SHALL BE INSTALLED WITH A UNIFORM THICKNESS. LIFTS SHALL NOT TO EXCEED 3" COMPACTED THICKNESS FOR 19MM BASE PAVEMENT.
9. TACK COAT SHALL BE SPRAY APPLIED TO THE SAW CUT EDGES OF THE EXISTING PAVEMENT, BROOM APPLICATION IS NOT ACCEPTABLE.

PIPE INSTALLATION - PERMANENT TRENCH REPAIR

N.T.S.



Water Resource Protection
 111 Waterman Drive
 PO Box 9422
 South Portland, ME 04116-9422
 Ph # 207-767-7675
 Fax# 207-767-5697
 www.southportland.org

DESIGNED BY: AB
 CHECKED BY: AB
 DATE: DECEMBER, 2015
 SCALE: NOT TO SCALE