

SOUTH PORTLAND POLICE DEPARTMENT



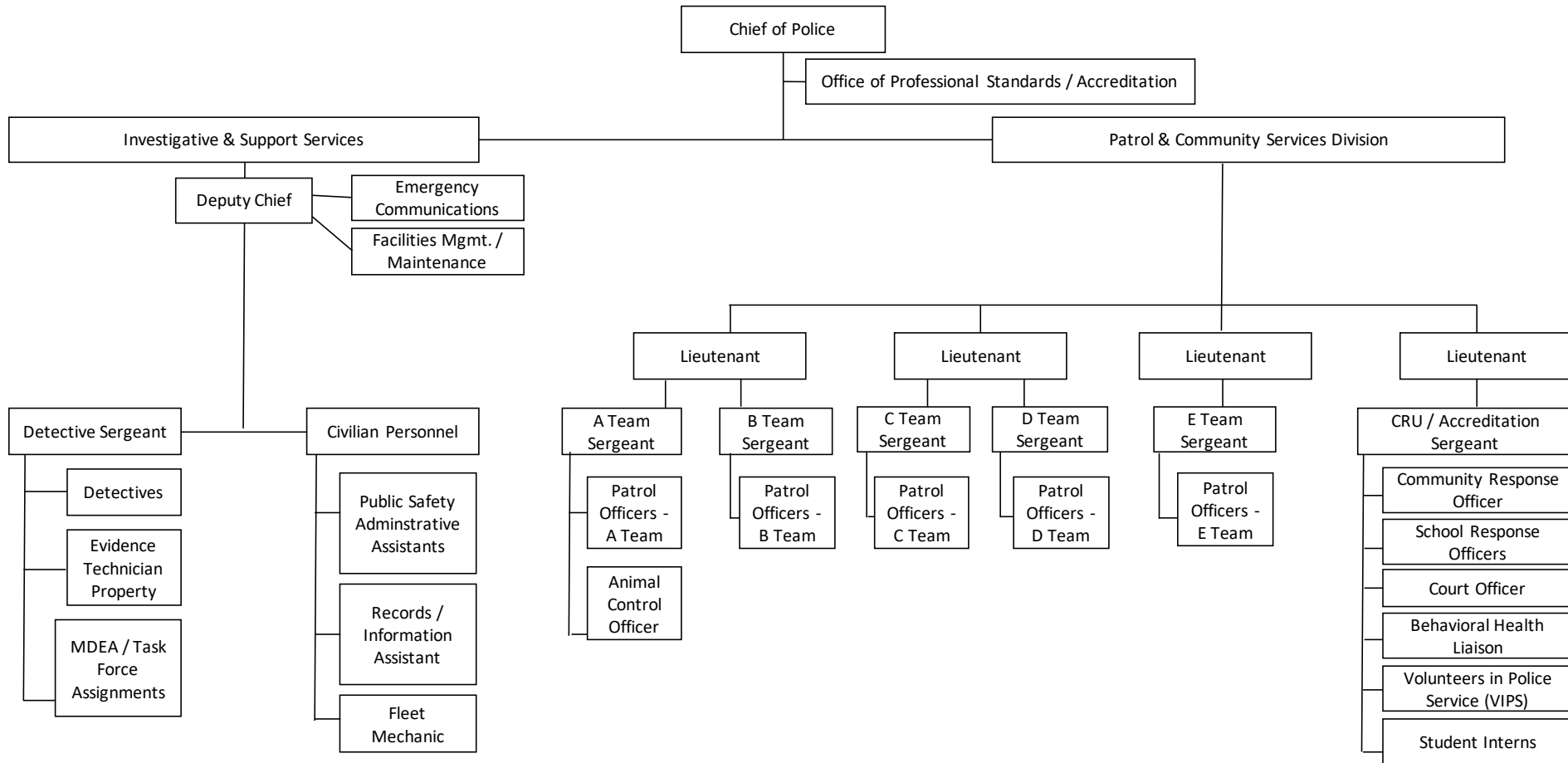
SPPD CFS Workshop Presentation
2020-11-17

South Portland Police Department

56 Sworn Officers

6 Civilians

Organizational Chart



Administration

Chief of Police

Deputy Chief of Police

Administrative Support

Behavioral Health Liaison

Animal Control Officer

Fleet Mechanic

Sworn Personnel

Lieutenants (4)

Sergeants (7)

Patrol Officers (42)

Includes:

K-9 handlers (3)

School Resource Officers (2)

Community Response Unit (3)

Investigative & Support Services

Detective Sergeant (1)

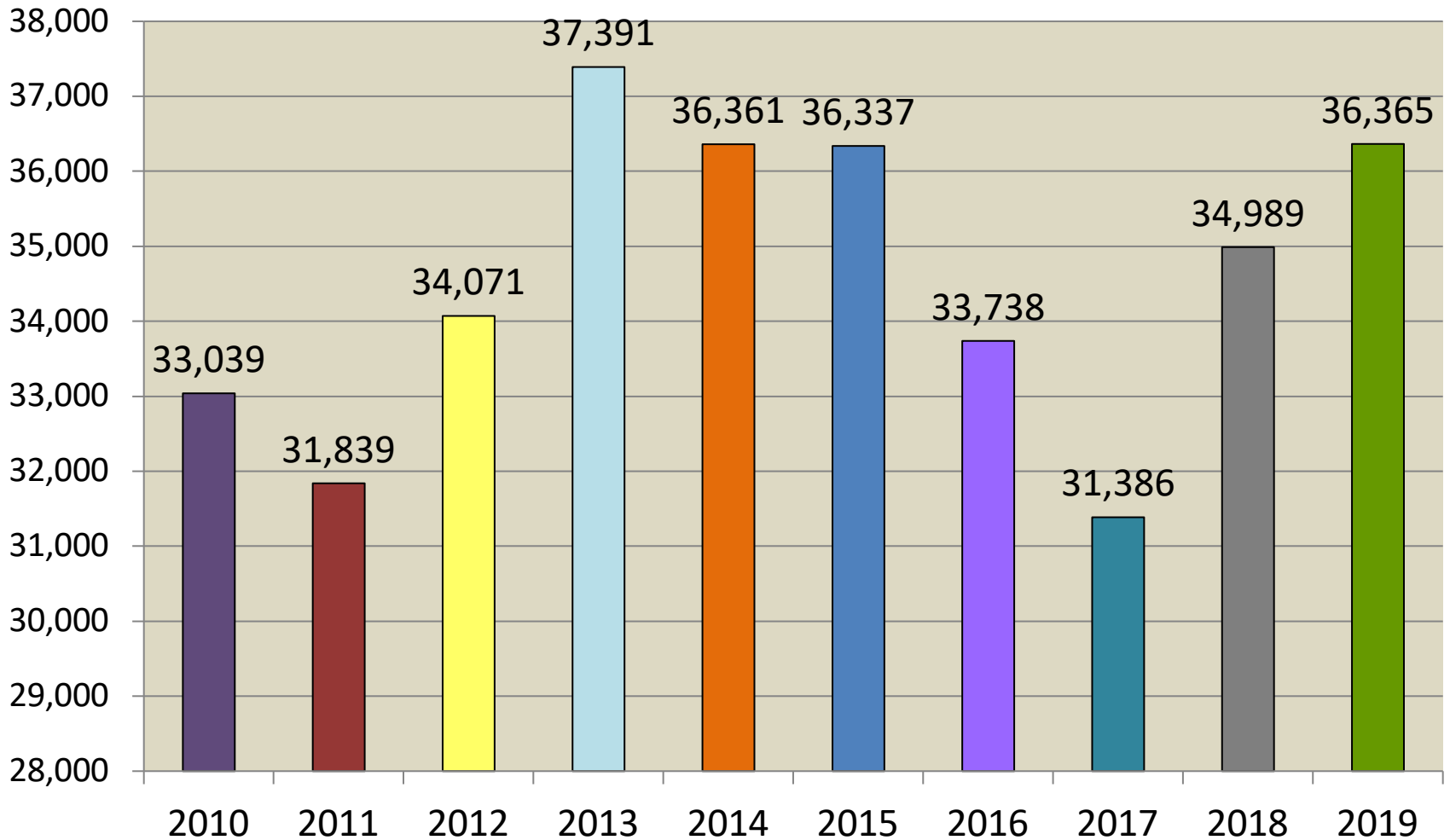
Detectives (4)

Evidence Technician (1)

M. D. E. A. (1)

FBI Safe Streets Task Force (1)

Calls for Service 2010 - 2019



BACKGROUND: EUGENE-SPRINGFIELD, OR



- Dispatch: Police/Fire/CAHOOTS
- 2019 Response: 24,000 calls (17% of total dispatched by 911)
 - Only 250 calls where CAHOOTS called for police back-up
- MOU's with various providers
 - Direct admit beds to Detox and Crisis Stabilization Unit
 - Work with non-profit for access to medical, dental, housing, counseling, substance use, and transportation
- Respond to 5 major Call Types:
 - Suicidal Threats
 - Intoxicated/DIP
 - Layout
 - Check Well Being
 - Behavioral Health

BACKGROUND: EUGENE-SPRINGFIELD, OR



- All team members complete 500 hours of training that emphasizes de-escalation and crisis intervention
 - Teams are comprised of a medic (nurse or EMT) and a BH crisis worker
 - Not designed to replace policing, respond to non-violent crisis
 - 60% of clients are homeless and 30% live with severe mental illness
- Most common type of calls diverted to CAHOOTS from PD
 - Welfare Checks (32.5%)
 - Public Assistance/Non-Emergency Medical Care (66.3%)
 - Transportation to Services (34.8%) (direct to treatment)

SOUTH PORTLAND NUMBERS (City-Wide)

	2017	2018	2019
Annual Calls	31386	34989	36365
Suicide Threats	198	201	216
Intoxicated Person	136	87	133
Layout	77	68	75
Check Well Being	565	614	691
Behavioral Health	190	267	316
TOTAL	1166 (3.8%)	1237 (3.6%)	1431 (4%)
Drinking in Public	17	32	12
Persons Bothering/ Refusing to Leave	385	372	411
Criminal Trespass	50	59	61
TOTAL	452 (1.5%)	463 (1.4%)	484 (1.4%)

PORTLAND NUMBERS (City-Wide)

	2017	2018	2019
Annual Calls	81792	77980	81076
Suicide Threats	959	859	821
Intoxicated Person	780	775	657
Layout	565	587	623
Check Well Being	2597	2379	2517
Behavioral Health	1237	1022	1123
TOTAL	6138 (7.5%)	5622 (7.2%)	5751 (7.1%)
Drinking in Public	644	609	513
Persons Bothering/ Refusing to Leave	4086	3730	3638
Criminal Trespass	763	628	680
TOTAL	11631 (14.2%)	10589 (13.6%)	10582 (13.1%)

South Portland PD (current)

- 100% of Officers CIT Trained (de-escalation)
- 1st PD in Maine completed the One Mind Campaign (IACP)
- 100% trained in Mental Health First Aid
- Full-time Behavioral Health Liaison (2018)
- Outreach, Follow-up, and Co-Response
 - CRU Officer/BHL Pilot
- Less Lethal Options

Social Service Partnerships/SPPD

- **Community Partnerships for Protecting Children (CPPC)**
- **Cumberland County High Risk Response Team (HRRT)**
- **SARSSM's Sexual Assault Response Team (SART)**
- **South Portland Provider's Group**
- **Through These Doors (TTD) Enhanced Police Intervention Collaboration (EPIC)**
- **The Opportunity Alliance / Cumberland County Crisis**
- **Southern Maine Agency on Aging**
- **Portland Recovery Community Center (PRCC)**
- **Milestone Recovery**
- **Preble Street Resource Center**
- **Cumberland County Coalition Substance Use Prevention (CCCSUP)**
- **Amistad**
- **Greater Portland Health**
- **General Assistance (GA)**
- **Trauma Intervention Program (TIP)**
- **Restorative Justice Institute of Maine (also called Maine Youth Court)**

South Portland PD (future/potential)

- PAARI Recovery Corps Capacity Builder (Oct.)
- Ethical Policing is Courageous (EPIC)/Active Bystandership for Law enforcement (ABLE)
- CDBG Funds- 2 Recovery Coaches
- BHL/CRU Co-response Program
- The Home Team (Milestone Recovery/CDBG)
- Police/Fire Partnership
- CAHOOTS/SPPD-PPD-PRCC