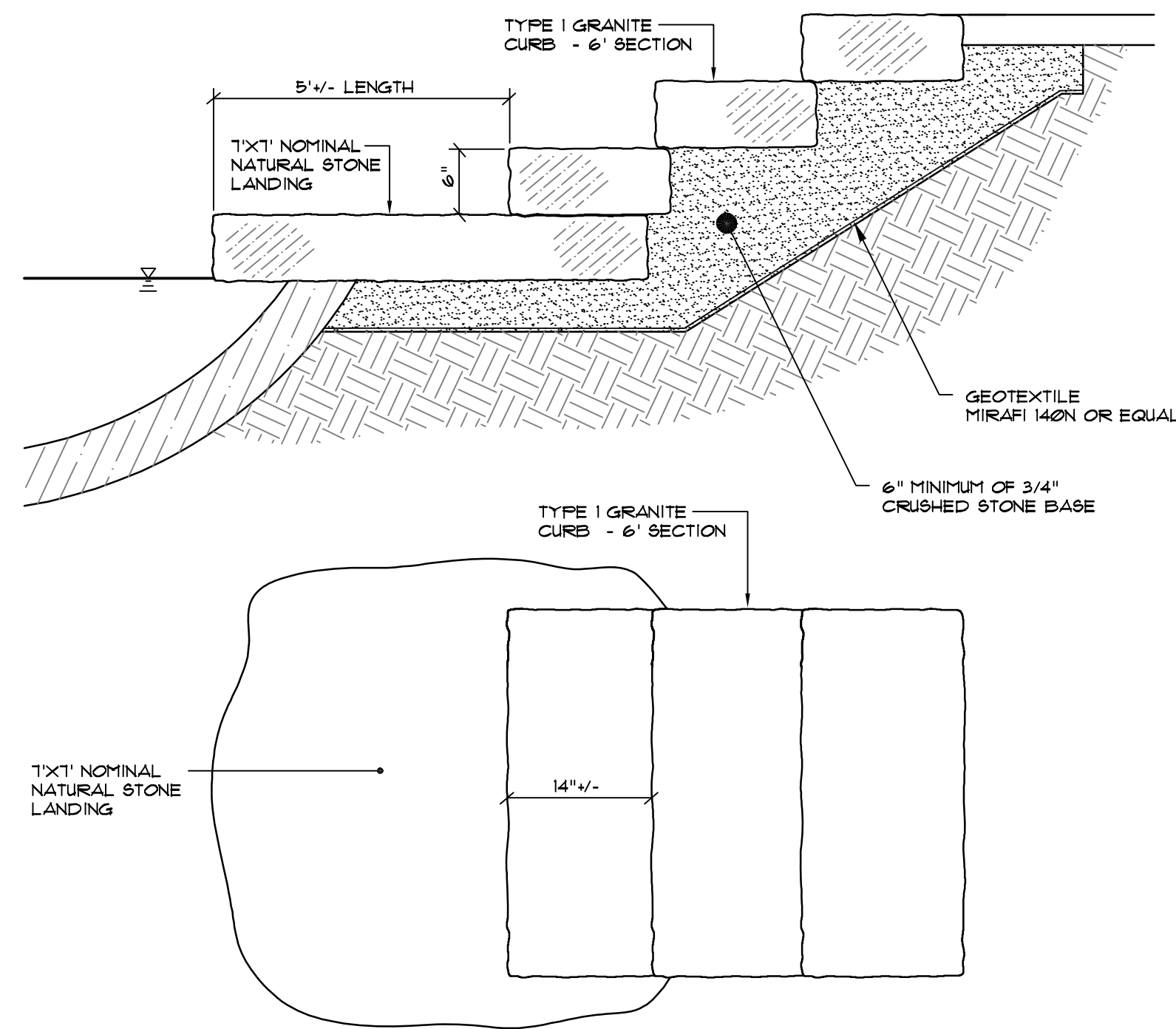
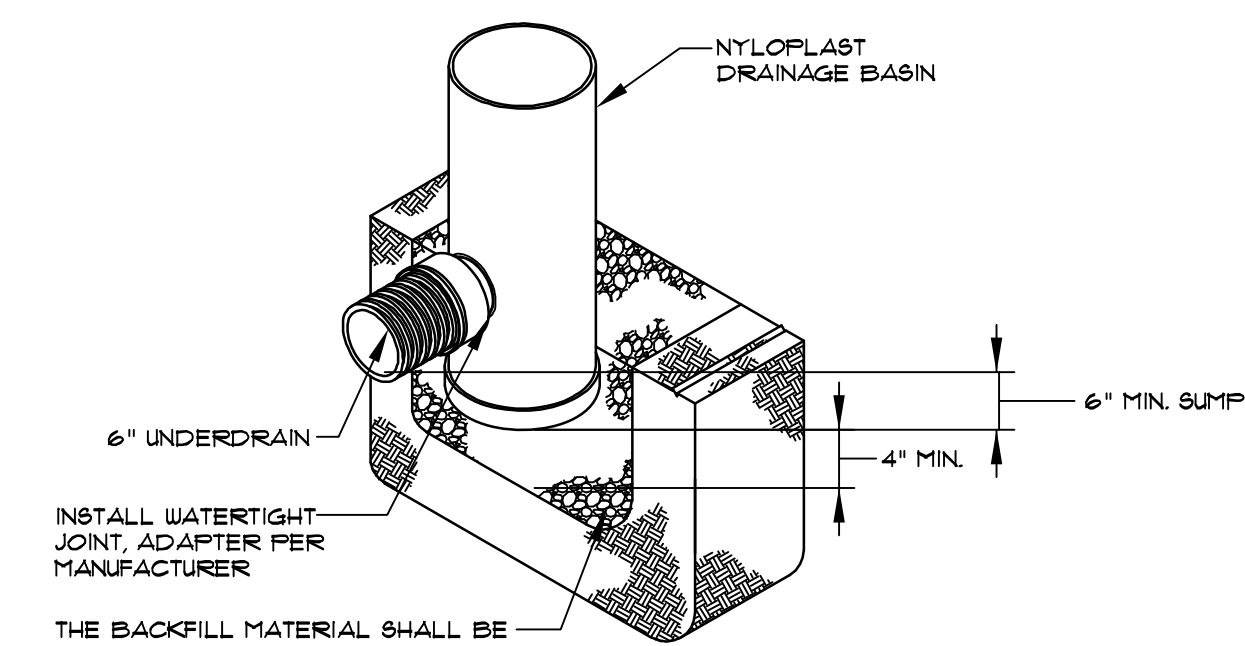


**POND WALL MASONRY DETAIL**  
NOT TO SCALE



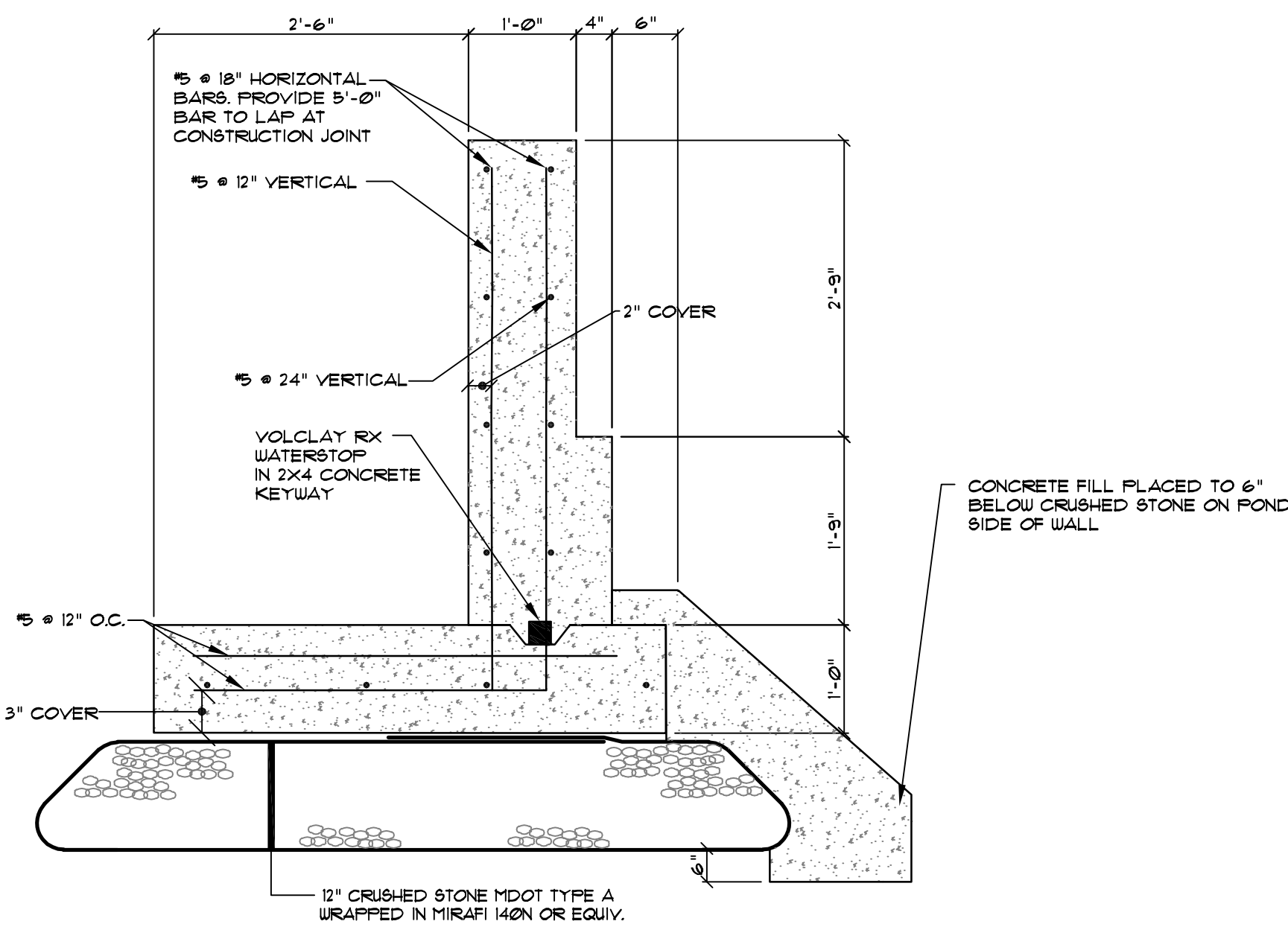
**ACCESS STAIR DETAIL**  
NOT TO SCALE



THE BACKFILL MATERIAL SHALL BE CRUSHED STONE OR OTHER GRANULAR MATERIAL MEETING THE REQUIREMENTS OF CLASS II MATERIAL AS DEFINED IN ASTM D2921. BEDDING & BACKFILL FOR SURFACE DRAINAGE INLETS SHALL BE PLACED & COMPACTED UNIFORMLY IN ACCORDANCE WITH ASTM D2921

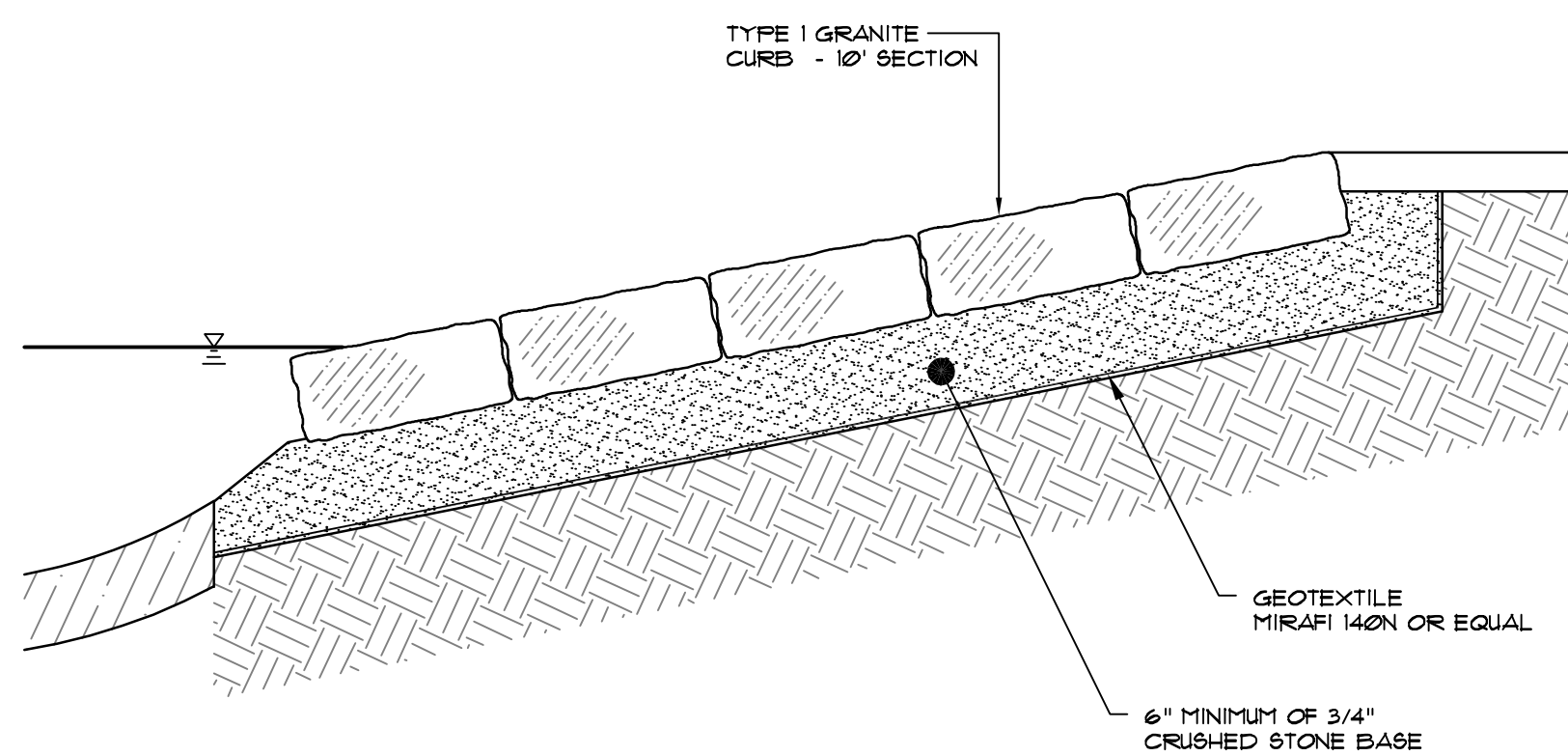
**NOTES:**  
1. INSTALL BASIN IN ACCORDANCE WITH MANUFACTURER'S RECOMMENDATIONS.

**TYP. NYLOPLAST IN-LINE DRAIN**  
NOT TO SCALE

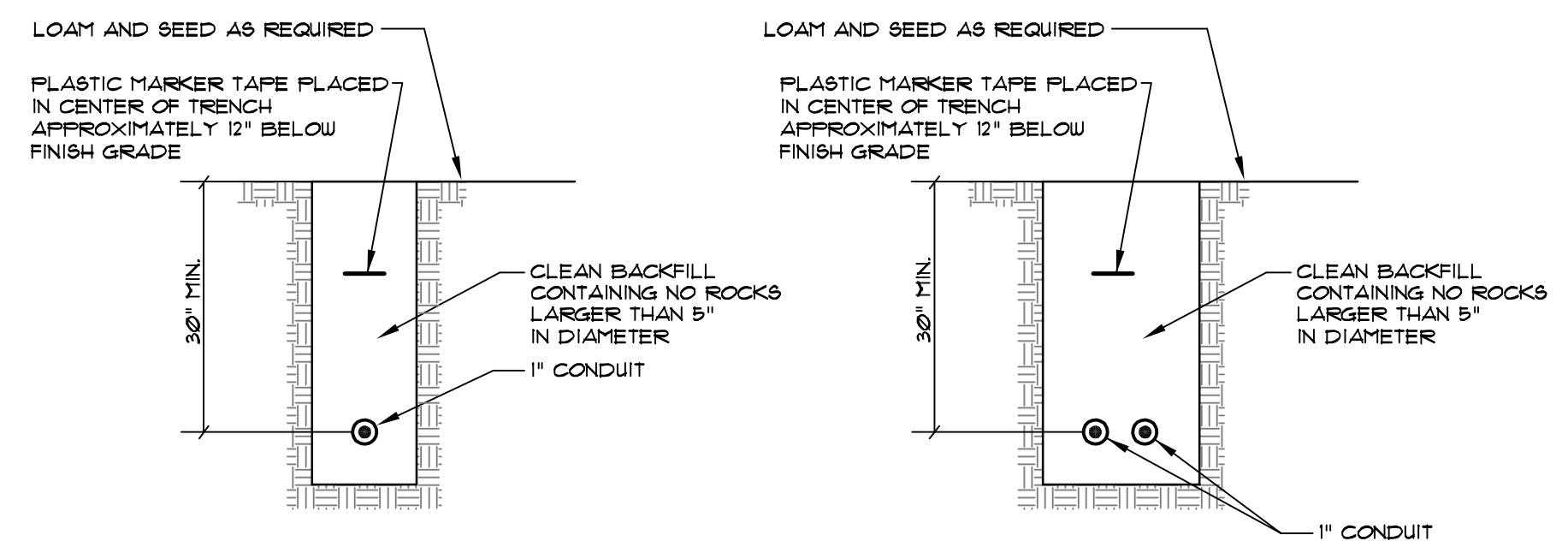


**NOTES:**  
1. PLACE WALL FOOTING ALONG A TRUE RADIUS.  
2. PLACE NO CONCRETE WITHOUT REVIEW AND APPROVAL OF THE REINFORCING AND EMBEDDED ITEMS BY THE CITY OR BY THE ENGINEER. SUBMIT REINFORCING SHOP DRAWINGS TO SEBAGO TECHNICS FOR APPROVAL.

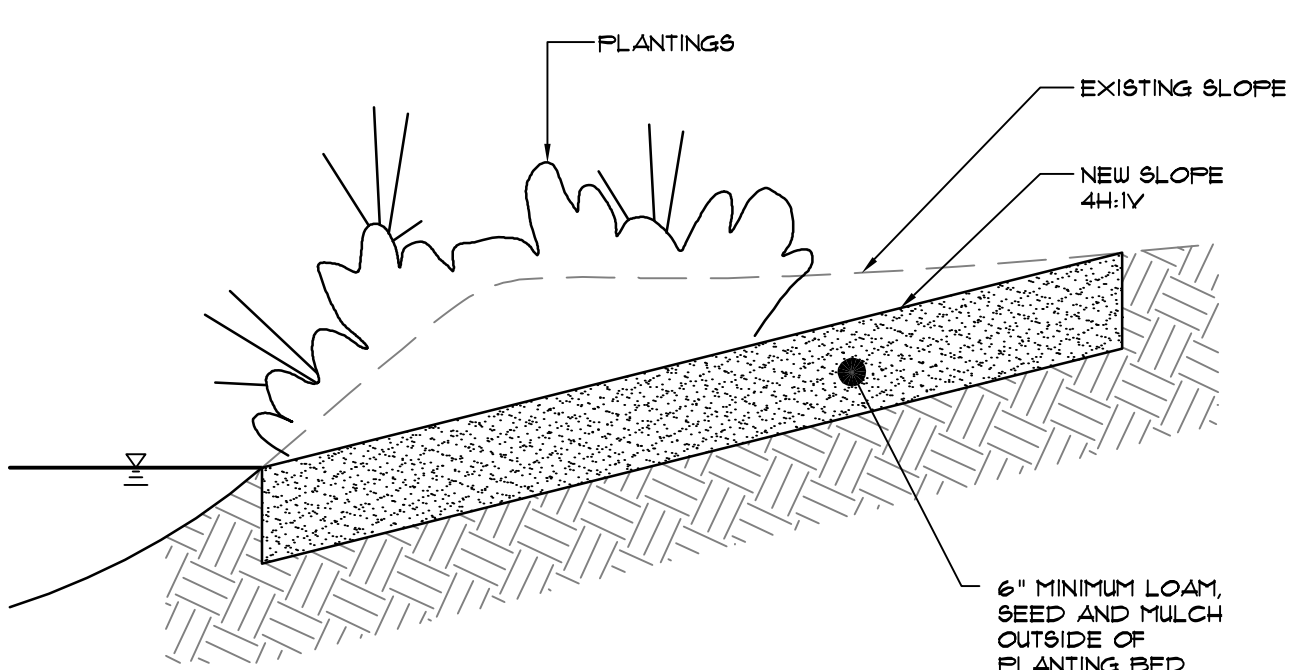
**POND WALL FOOTING DETAIL**  
NOT TO SCALE



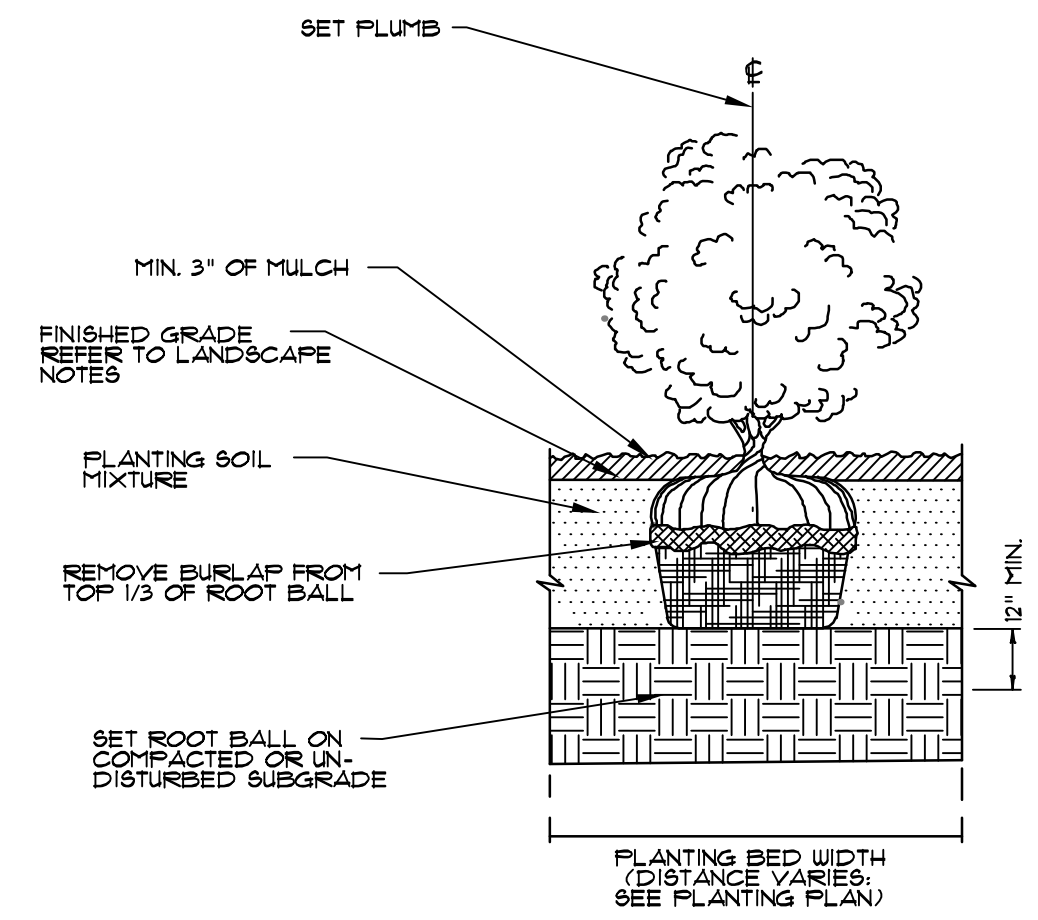
**STAIR ACCESS DETAIL**  
NOT TO SCALE



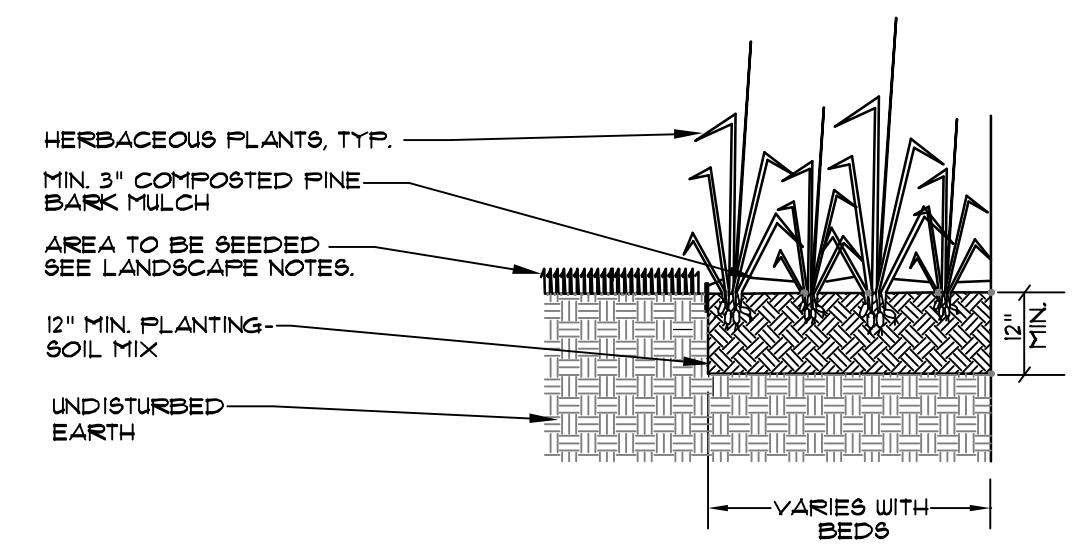
**TYPICAL UNDERGROUND CABLE INSTALLATION**  
NOT TO SCALE



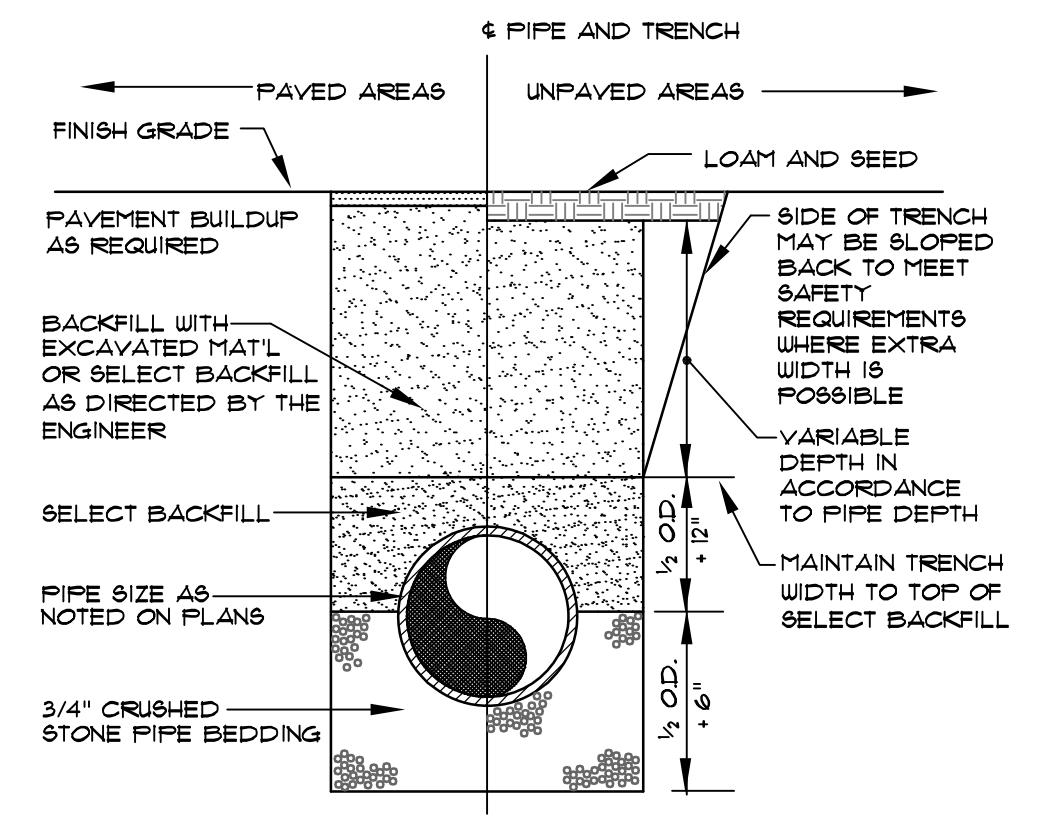
**SHORELINE STABILIZATION**  
NOT TO SCALE



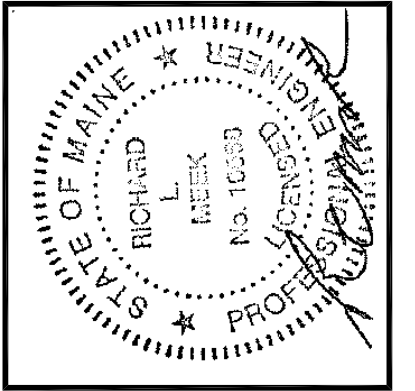
**SHRUB PLANTING DETAIL**  
NOT TO SCALE



**HERBACEOUS PLANTING DETAIL**  
NOT TO SCALE



**TYPICAL TRENCH SECTION**  
NOT TO SCALE



ADDENDUM 2	2-27-15	RLM	BY:	DATE:	STATUS:
A	2-9-15	RLM	REV:		

THIS PLAN SHALL NOT BE MODIFIED WITHOUT WRITTEN PERMISSION FROM SEBAGO TECHNICS, INC. ANY ALTERATIONS, AUTHORIZED OR OTHERWISE, SHALL BE AT THE USER'S SOLE RISK AND WITHOUT LIABILITY TO SEBAGO TECHNICS, INC.

**SEBAGO TECHNICS**  
WWW.SEBAGOTECHNICS.COM  
75 John Roberts Rd., Suite 1A South Portland, ME 04106  
Tel: 207-282-2100  
Fax: 207-783-5888

DESIGN	CHKD	DRAWN
SGD	RLM	JAR

PROJECT NO. 09361 FIELD BOOK 89542

DETAILS OF: **MILL CREEK PARK**  
61 COTTAGE RD  
SOUTH PORTLAND, MAINE  
FOR RECORD OWNER: **CITY OF SOUTH PORTLAND**  
P.O. BOX 9422  
SOUTH PORTLAND, ME 04116-9422

DATE	SCALE
09-23-14	1" = 20'

SHEET 6 OF 6

09361D.dwg, TAB:D2