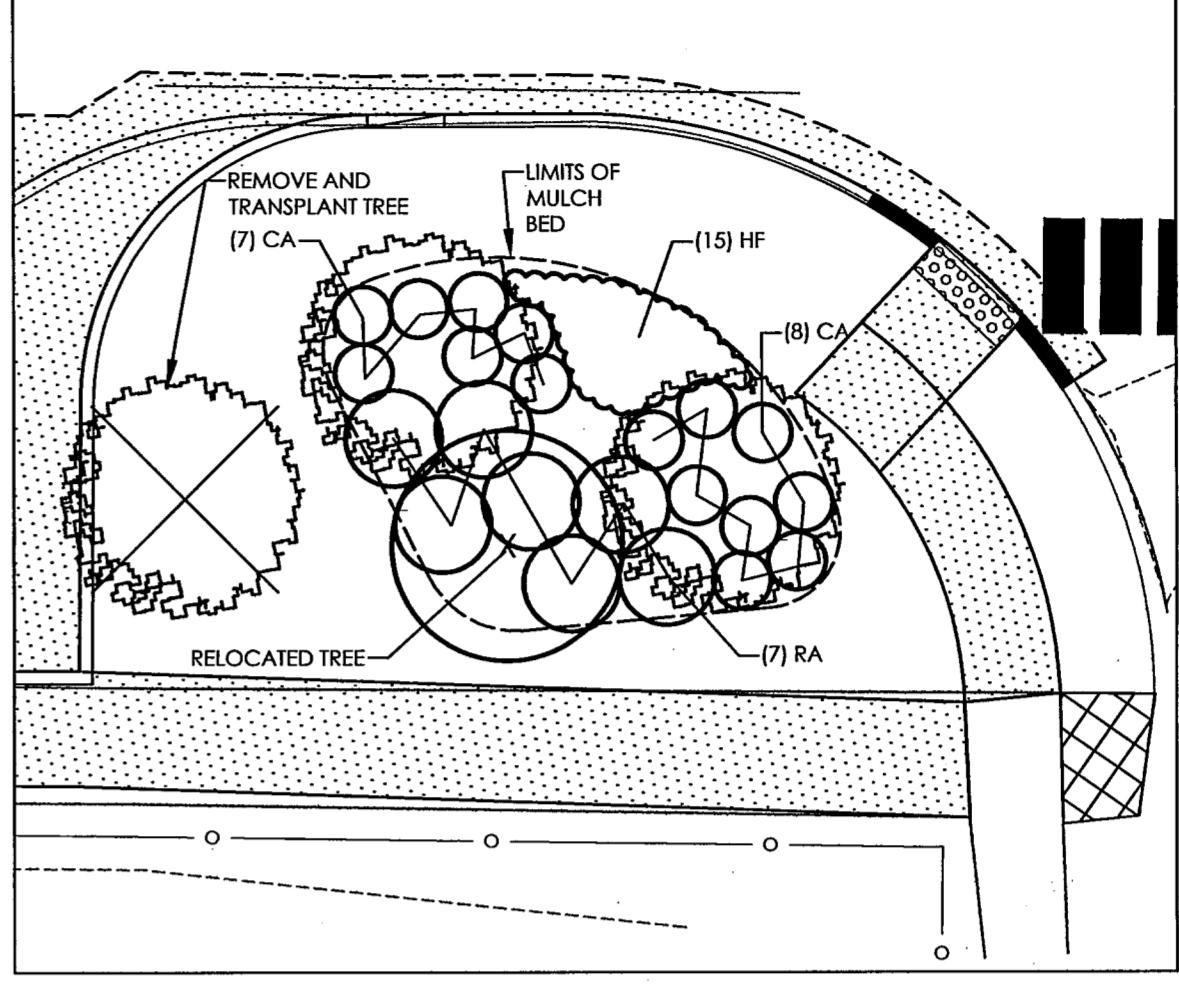


**LANDSCAPE AREA #1**  
SCALE: 1"=10'



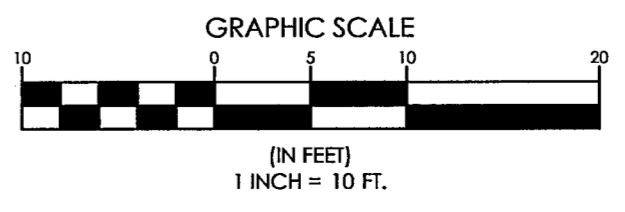
**LANDSCAPE AREA #2**  
SCALE: 1"=10'

**LANDSCAPE NOTES**

1. PLANT QUANTITIES SHOWN ON PLANT LISTS ARE FOR CONVENIENCE TO THE CONTRACTOR ONLY. THE CONTRACTOR IS RESPONSIBLE FOR ALL PLANT MATERIAL INSTALLATION AS SHOWN ON PLANS.
2. SIZE AND GRADING STANDARDS OF PLANT MATERIALS SHALL CONFORM TO THE LATEST EDITION OF "U.S.A. STANDARD FOR NURSERY STOCK," BY THE AMERICAN ASSOCIATION OF NURSERYMEN, INC.
3. ALL PLANT MATERIAL SHALL BE FREE FROM INSECTS AND DISEASE.
4. ALL PLANTING SHALL BE DONE IN ACCORDANCE WITH ACCEPTABLE HORTICULTURAL PRACTICES. THIS IS TO INCLUDE PROPER PLANTING MIX, PLANT BED AND TREE PIT PREPARATION, PRUNING, STAKING OR GUYING, WRAPPING, SPRAYING, FERTILIZATION, PLANTING AND ADEQUATE MAINTENANCE UNTIL ACCEPTANCE BY THE OWNER.
5. PLANT MATERIAL SHALL BE GUARANTEED FOR A PERIOD OF ONE YEAR FROM SUBSTANTIAL COMPLETION BY THE CONTRACTOR AND A PERIOD OF TWO YEARS THEREAFTER BY THE OWNER FROM DATE OF INSTALLATION. DURING THE ONE YEAR GUARANTEE PERIOD, DEAD PLANT MATERIAL SHALL BE REPLACED AT NO COST TO THE OWNER. AT THE END OF THE ONE YEAR PERIOD, THE CONTRACTOR SHALL OBTAIN FINAL ACCEPTANCE FROM THE OWNER.
6. ALL GRASS, OTHER VEGETATION AND DEBRIS SHALL BE REMOVED FROM ALL PLANTING AREAS PRIOR TO PLANTING.
7. EXISTING TREES TO BE PRESERVED WILL BE PROTECTED DURING CONSTRUCTION AND SHALL BE THE RESPONSIBILITY OF THE GENERAL CONTRACTOR.
8. THE LANDSCAPE CONTRACTOR IS ADVISED OF THE PRESENCE OF THE UNDERGROUND UTILITIES AND SHALL VERIFY THE EXISTENCE AND LOCATION OF SAME BEFORE COMMENCING ANY DIGGING OPERATIONS. THE LANDSCAPE CONTRACTOR SHALL REPLACE OR REPAIR UTILITIES, PAVING, WALKS, CURBING, ETC. DAMAGED IN PERFORMANCE OF THIS JOB AT NO ADDITIONAL COST TO THE OWNER.
9. ALL SHRUB BEDS SHALL BE MULCHED WITH 3" CLEAN SHREDDED DARK BROWN BARK MULCH.
10. THE CONTRACTOR SHALL PROVIDE 6" LOAM FOR ALL AREAS TO BE SODDED OR SEEDED. PLANTING AREAS SHALL RECEIVE 12" ROLLED THICKNESS OF LOAM. THE LANDSCAPE CONTRACTOR SHALL COORDINATE SUBGRADE PREPARATION WITH THE GENERAL CONTRACTOR PRIOR TO PLACING LOAM.
11. ANY DEVIATION FROM THE LANDSCAPE PLAN, INCLUDING PLANT LOCATION, SELECTION, SIZE, QUANTITY OR CONDITION SHALL BE REVIEWED AND APPROVED BY THE OWNER AND LANDSCAPE ARCHITECT (AND MUNICIPAL AUTHORITY, IF APPLICABLE) PRIOR TO INSTALLATION ON SITE.
12. WHERE INDICATED ON PLAN, PLANTING SOIL MIXTURE FOR PERENNIAL AND ANNUAL FLOWER BED AREAS SHALL CONSIST OF FOUR PARTS TOPSOIL, TWO PARTS SPHAGNUM PEAT MOSS, AND ONE PART HORTICULTURAL PERLITE BY VOLUME. PEAT MOSS MAY BE SUBSTITUTED WITH WELL-ROTTED OR DEHYDRATED MANURE OR COMPOST. ROTOTILL BEDS TO A DEPTH OF 8 INCHES.

**PLANTING LIST**

KEY	BOTANICAL NAME	COMMON NAME	SIZE
CA	CALAMAGROSTIS ACUTIFLORA 'KARL FOERSTER'	FEATHER REED GRASS	CONT #1
HF	HEMEROCALLIS FULVA 'STELLA D'ORO'	DAYLILY	CONT #1
RA	RHUS AROMATICA 'GRO-LOW'	FRAGRANT SUMAC	CONT #3



REVISIONS		DATE	
A	ISSUED FOR BID	DLR	8-13-14
B	ADDENDUM 1	DLR	8-21-14
DRAWN BY: SAP		DATE: 8-06-14	
APPROVED BY: DLR		DATE: 8-06-14	
CHECKED BY: DLR		DATE: 8-06-14	
PROJECT NO. 14083		SCALE AS NOTED	

Public Works Department  
42 O'Neil Street  
South Portland, ME 04116-9422  
Ph: # 207-767-7635  
Fax: # 207-767-7636

CITY OF SOUTH PORTLAND  
WATERMAN DRIVE  
PARKING IMPROVEMENTS  
LAYOUT PLAN

DWG 3